

**UNITING FOR GROWTH**

Saturday 18 March, 2023



**Target audience and ultimate goal**

[1] Our target audience are government leaders and United Nations (UN) representatives, and our ultimate goal is to enable global sustainability and cooperation.



### **A measure of global sustainability and cooperation**

[2] Resource utilization efficiency is a measure of how effectively resources are used to achieve a desired outcome. The theoretical ideal, or 100%, is where each individual has equitable access to resources and there is no waste in the system. This means that the system works perfectly and resources are used most efficiently.

Foundation University is well equipped to help realise global resource utilisation efficiency. Our team of experts, specialising in environmentally friendly options, can help create an optimised system with the help of advanced computing power. This can propel us towards a more sustainable future, using existing resources more efficiently.

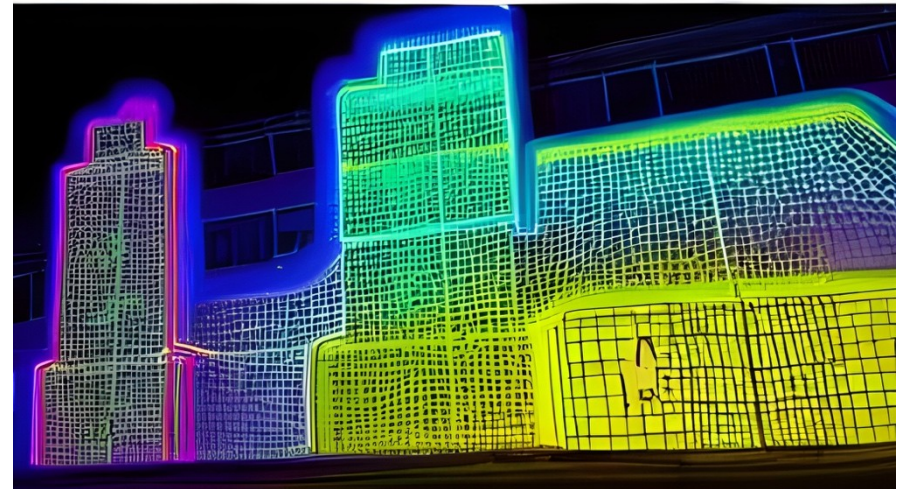
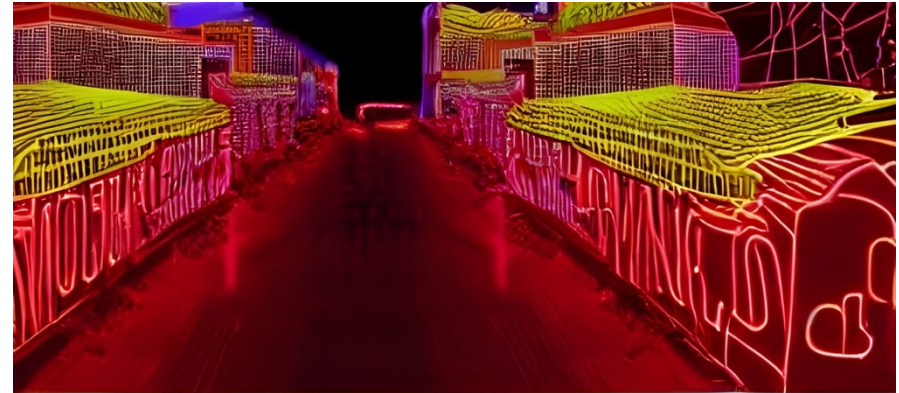


## Global Economy

[3] Neoliberalism encourages an unequal distribution of resources, and creates an artificial world order where the majority of the population is excluded from accessing the vast majority of resources. This should not be accepted; resources are finite and by denying their fair distribution, we are limiting their availability to everyone.

[4] Neoliberalism creates a divide in economic power between nations and within. The socio-economic structures created by neoliberalism, such as international trading and market liberalization, disproportionately benefit certain nations over others. Similarly, within a nation, neoliberalism fosters inequality by giving wealthy individuals greater power to accumulate wealth than the average person.

[5] Currency should be tied to something valuable, such as gold, or a basket of commodities, to ensure it has a real and stable value. This will prevent it from becoming a speculative asset and reduce the risk of financial bubbles. A stable system of exchange based on reliable, inelastic assets will support long-term economic growth and reduce inequality.



[6] The focus on short-term cost minimization has allowed the exploitation of workers and the environment in the process of raw material extraction, product manufacturing, and transportation. This requires urgent action to prioritize human welfare and sustainability, over short-term cost savings.

[7] The law in place requires that more developed nations to not only stop business and international trade practices which favour the flow of cash over human rights and environmental sustainability, but to actively ensure that their business practices are not possibly engaging in what is essentially crime against humanity. More developed nations must not only end practices that put profits before human rights and environmental sustainability, but also take positive steps to ensure their trade and business activities are ethical and respectful of these values.

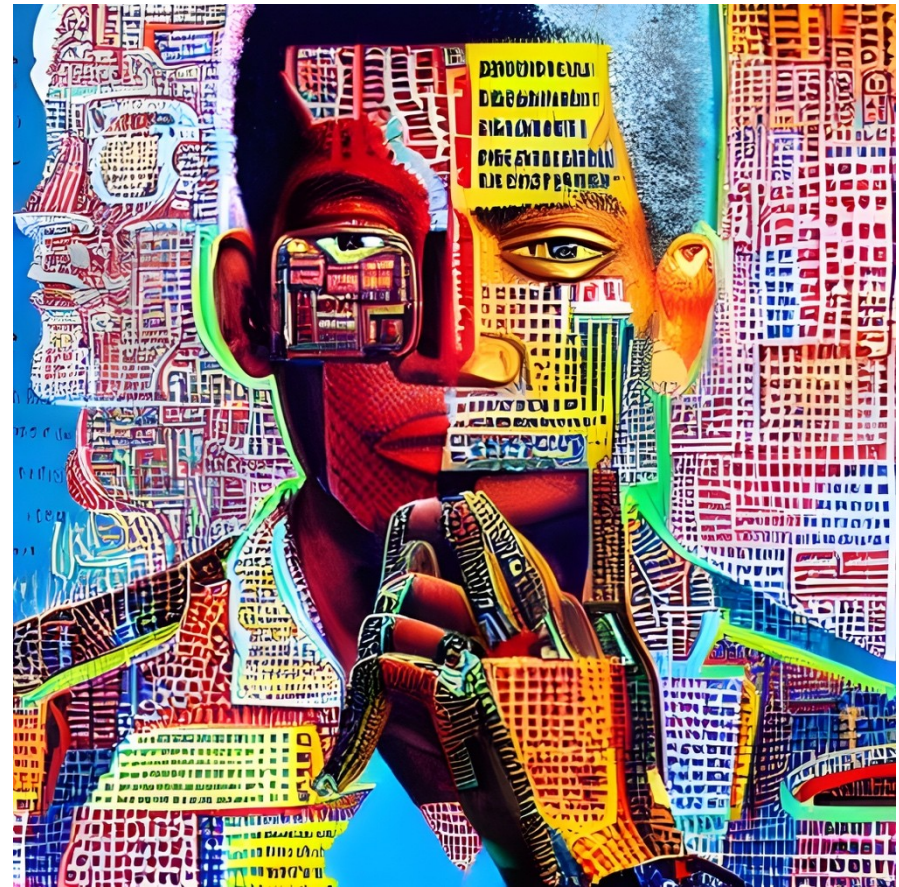


[8] As we make financial and moral investments in militarized conflict, we must consider if our priorities are aligning with our desired outcomes. Instead of investing in tools of war, should we be redirecting our resources and knowledge to conflict resolution and providing true relief? We must weigh the consequences and potential rewards of both.



## Foundation University Integration

[9] During Phase I, by coordination with Foundation University and the United Nations, offices are to be set up in UN HQ and as many local offices as possible.



## Health

[10] Investing in primary healthcare and maternity clinics is essential. Early detection, disease prevention and access to tools to better manage existing conditions will have significant positive impact. These services allow individuals to take better control of their health and reduce the need for more costly, complicated treatments. By ensuring everyone has access to basic health care, more people will be able to lead healthier and more productive lives.





[11] The Foundation University Integration Units will coordinate programs to equip primary healthcare and maternity clinic personnel with the knowledge and skills necessary to deliver effective and efficient primary healthcare to their local community. The program will be designed to be simple, adaptable and rigorously implemented, providing an accessible resource to improve health outcomes.





[12] The goal of primary healthcare is to improve health outcomes for mothers and children *first*. Through comprehensive health services, education and preventative measures, we hope to ensure a healthier future for all. We will measure the success of these goals through key performance indicators such as enhanced patient outcomes, decreased healthcare costs, improved satisfaction with healthcare services, reduced referral trends, and increased health knowledge and awareness.

[13] Government coordination is a key factor in improving access to primary healthcare. To this end, investment in health infrastructure and preventive care should be prioritized, as should measures aimed at improving health education and nutrition for pregnant women and infants, among others.

## Education

[14] Foundation University provides an opportunity to ensure every child can access a high quality, appropriate education that is tailored to their local environment and that keeps up with ever-evolving global trends. This is made possible through the support of individuals, institutions and organizations, who come together to create a synergistic platform that provides knowledge, resources, and support to children.

[15] Accessibility to comprehensive syllabi and teaching methods is best utilised when partnered with policy restructuring. This may involve replacing traditional requirements of attending school with passing an exam or series of exams. This reform can remove some of the barriers to accessing education, making it more accessible to people of all backgrounds, especially those from disadvantaged countries.

[16] The Foundation University-National diploma will be a world-class benchmark of secondary school education, providing a globally recognised qualification.

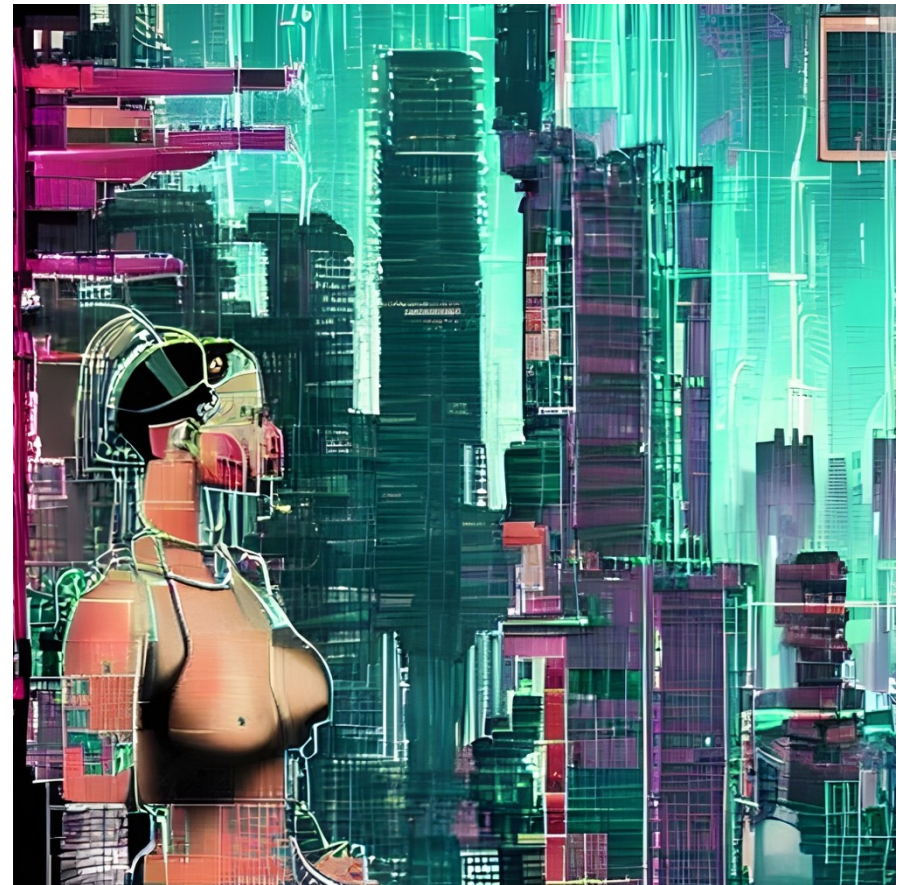


### **Gender inequality and racial discrimination**

[17] Gender inequality is a pervasive, shameful problem that lingers despite the most advanced societies having access to resources for its elimination. Unfortunately, unequal economic conditions and cultural norms have led to structures of gender imbalance that can have devastating effects on mother-infant relationships. It's time for a drastic change.

[18] Racial discrimination is a complex issue rooted in historical, cultural and economic factors. Though it manifests in different ways, it ultimately comes down to individuals making negative judgements based on someone's race. We must continue working to eliminate these prejudices and replace them with understanding and respect.

[19] Foundation university will lead by example. To compete, cooperate, or join, the only criterion is that allowed by law and international standards, which is meritocracy. At the same time, national law will be utilised to build workplaces in which competent and motivated mothers may grow with her infants.



### **Environmental damage and access to water**

[20] The harvesting of raw materials, the manufacturing of products, and their transport to point of consumption is of such nature as to prioritise minimisation of immediate short term costs. This dictum, in addition to being responsible for conditions bordering on slavery or indistinguishable from historical slavery, has damaged the environment and is damaging environments in ways that are all too apparent.

Such an approach emphasizes increased flow of cash, while neglecting the effects of long-term environmental damage and exploitation of workers. It leads to unethical business practices, including poor working conditions, low wages and unsafe labour. Consequently, people are deprived of rights and dignity, including their environmental heritage.





[21] Foundation University Integration Units bridge the gap between production and consumption by addressing power imbalances and unmet obligations between parties. If diplomacy fails, an escalation procedure will be employed to solve any disputes.

[22] Foundation University Integration Units will prioritize rescuing communities from the deprivation of their right to clean water, which is an essential part of life. We aim to do this through a variety of approaches, including minimizing the impact of industrialised processes on water resources and ensuring access to safe water for at-risk communities.

## Cybersecurity

[23] Cybersecurity is essential to ensure the safe exchange of goods and services. We must ensure our data, communications and infrastructure are secure and protected from any potential cyberthreats. To do this, we must implement robust security procedures and protocols that not only keep our data and networks safe, but also detect, identify and address any potential risks. By taking a proactive approach to cybersecurity, we can protect our business and customers from any malicious activity.





Irelynn and Helmy